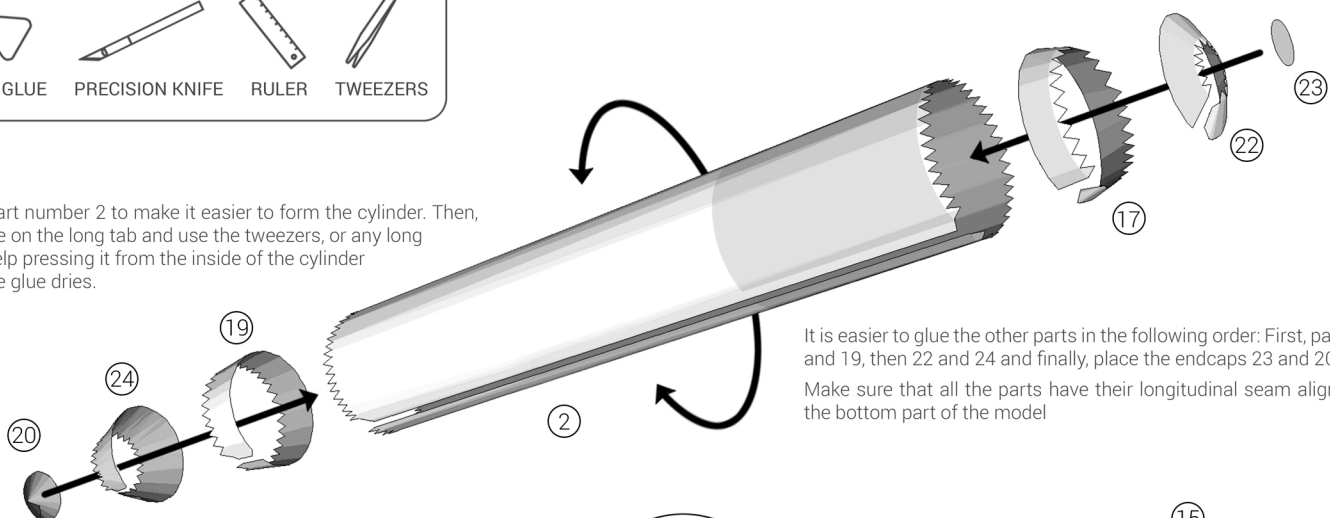


BUILD YOUR SPARUS II AUV

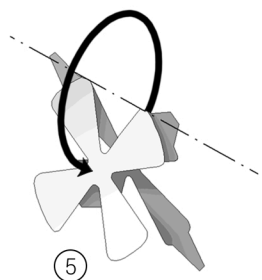
TOOLS



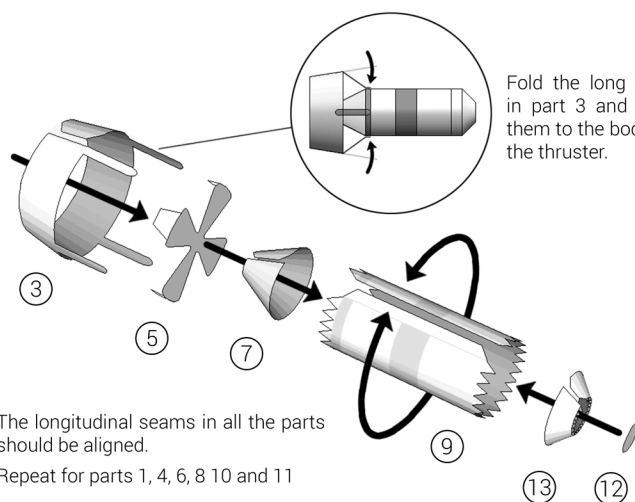
Pre-roll part number 2 to make it easier to form the cylinder. Then, apply glue on the long tab and use the tweezers, or any long tool, to help pressing it from the inside of the cylinder before the glue dries.



It is easier to glue the other parts in the following order: First, parts 17 and 19, then 22 and 24 and finally, place the endcaps 23 and 20. Make sure that all the parts have their longitudinal seam aligned in the bottom part of the model.

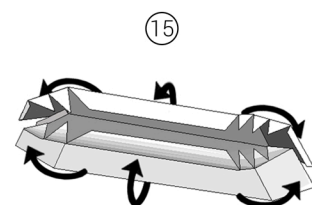


Fold the part following the line and glue together the white sides. Repeat for part 4.

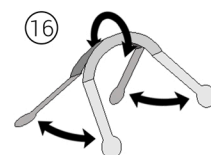


The longitudinal seams in all the parts should be aligned. Repeat for parts 1, 4, 6, 8, 10 and 11.

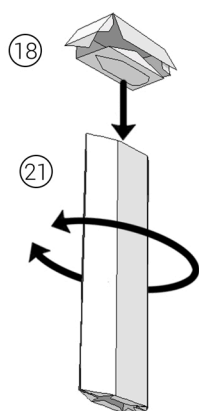
Fold the long tabs in part 3 and glue them to the body of the thruster.



Prepare the support for the thruster. Repeat for part number 14.

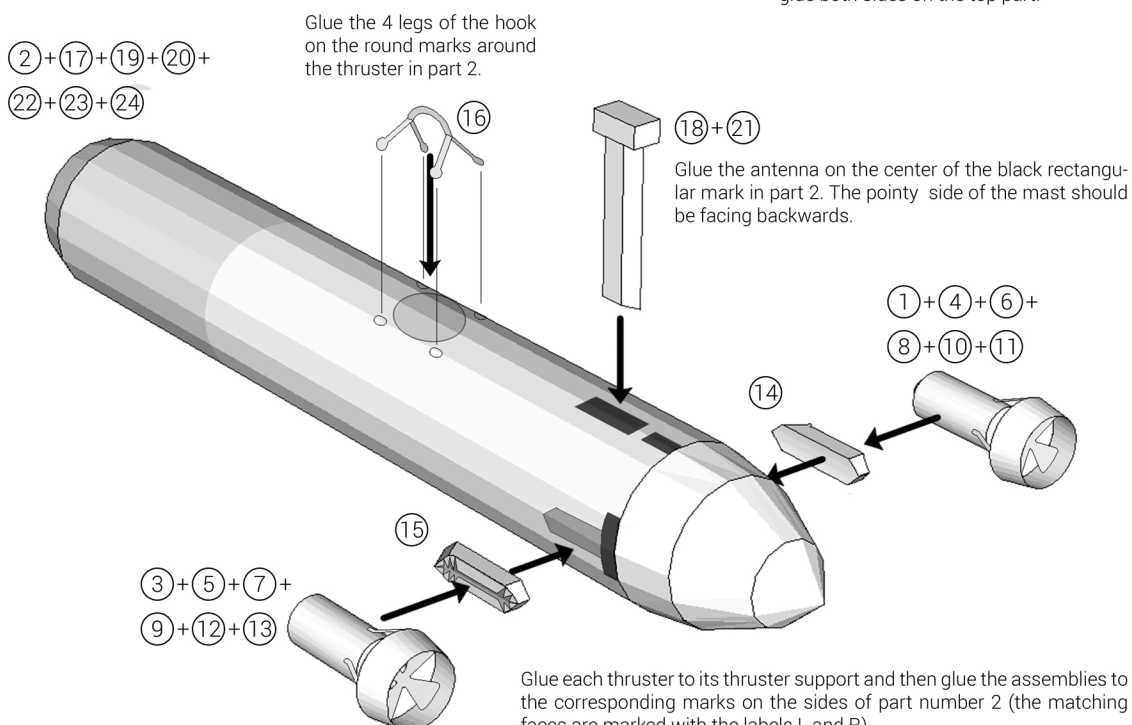


Fold the hook following the lines and glue both sides on the top part.



Part number 18 will form a box when folded.

Part 21 should be folded so its section fits the white outline on the bottom of part 18.



Glue the 4 legs of the hook on the round marks around the thruster in part 2.

Glue the antenna on the center of the black rectangular mark in part 2. The pointy side of the mast should be facing backwards.

Glue each thruster to its thruster support and then glue the assemblies to the corresponding marks on the sides of part number 2 (the matching faces are marked with the labels L and R).